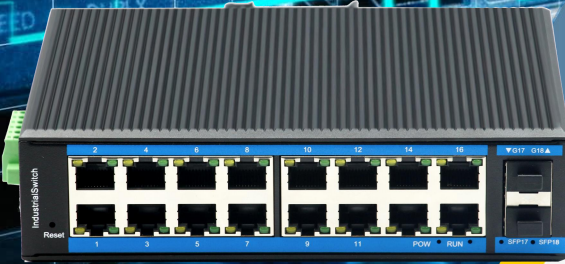


# Managed Industrial Switch

## FNS200-216-AGB-SFP-A



### Introduction

FNS200-216-AGB-SFP-A is a network managed industrial Ethernet switch, complies with FCC, CE, RoHS standards. Support 2 Gigabit optical ports and 16 Gigabit electrical ports; support the Ethernet layer 2 protocol required by the industrial site to ensure the stability of the communication network; this series of switches adopts low power consumption and fanless design to ensure no noise interference; At the same time, it supports -40~75°C working temperature and good EMC electromagnetic compatibility performance, ensuring stable work in harsh industrial environments, and building fast and stable network terminal interfaces for industrial applications such as factory automation, intelligent transportation, and video surveillance. Provide a safe and reliable solution for accessing the network.



Industrial-grade Design

- ▶ Metal casing, IP40 protection level
- ▶ Wide range operating temperature (-40°C~75°C)



Stability & Reliability

- ▶ Support QoS (IEEE 802.1p/1Q) and TOS/DiffServ to increase network stability



Standard & Convenience

- ▶ Support STP/RSTP/ERPS, SNMPv1/v2/v3 to ensure network security
- ▶ Support DIN-Rail and wall mounting
- ▶ Support POE (Optional)

# Managed Industrial Switch FNS200-216-AGB-SFP-A



High Performance

- ▶ Support IGMP Snooping
- ▶ Support port based VLAN port, IEEE 802.1Q VLAN, easy network planning
- ▶ Using RMON to improve the prediction capability of network monitoring machine
- ▶ Support port mirroring function facilitates online debugging
- ▶ Support port rate limiting, broadcast storm suppression
- ▶ Support multicast storm suppression, unknown unicast storm suppression
- ▶ Support security management: ACL, 802.1X
- ▶ Management function: supports WEB, CLI, and SNMP management
- ▶ Support port mirroring, interface status monitoring, log management

## Production Specification

Standard	
Model	FNS200-AGB
Item	Content
<b>Ethernet Standard</b>	<p>IEEE802.3-10BaseT, IEEE802.3u-100BaseTX/100Base-FX, IEEE802.3x-Flow Control, IEEE802.3z-1000BaseLX, IEEE802.3ab-1000BaseTX, IEEE802.1ab logical Link discovery protocol, IEEE802.1D-Spanning Tree Protocol, IEEE802.1w-Rapid Spanning Tree Protocol, IEEE802.1Q -VLAN Tagging, IEEE802.1p -Class of Service, IEEE802.1X-Port Based Network Access Control and,etc.</p>
<b>Industry Standard</b>	<p>EMI: FCC Part 15 Subpart B Class A, EN 55022 Class A</p> <p>EMC:</p> <p>IEC(EN)61000-4-2(ESD): ±6kV Contact discharge, ±8kV Air discharge</p> <p>IEC(EN)61000-4-3(RS) : 10V/m(80 ~ 1000MHz)</p> <p>IEC(EN)61000-4-4(EFT): ethernet port: ±2kV CM//±1kV DM.</p> <p>IEC(EN)61000-4-5(Surge): ethernet port: ±2kV CM//±1kV DM.</p> <p>IEC(EN)61000-4-6(Radio frequency conduction) : 3V(10kHz ~ 150kHz),10V(150kHz ~ 80MHz)</p> <p>IEC(EN)61000-4-16(Common mode conduction): 30V cont. 300V,1s</p> <p>IEC (EN)61000-4-8</p> <p>Shock: IEC 60068-2-27</p> <p>Freefall: IEC 60068-2-32</p> <p>Vibration: IEC 60068-2-6</p>

# Managed Industrial Switch

## FNS200-216-AGB-SFP-A



Switching Characteristics	
Model	FNS200-AGB-A
Item	Content
Buffer Memory	12Mbit
Transmission Method	Store-and-forward
Backplane Bandwidth	56G
Switching Latency	<10 $\mu$ s
MAC Address	8K
Power	
Item	Content
Input Voltage	Non POE: DC12-52V POE: DC48-57V (Dual power redundancy backup)
Access Terminal	Phoenix terminal block
Characteristics	Support dual power supply redundancy Support built-in over-current protection Support reverse connection protection with 4.0 A
Operating Environment	
Item	Content
Operating Temperature	-40 °C ~75°C
Storage Temperature	-40 °C ~85°C
Relative Humidity	5~95% (Non-condensing))
POE Standard (Optional)	
Item	Content
PoE Standard	IEEE802.3af/ IEEE802.3at
PoE Port	1-16 port support PoE
Output Power	Single port maximum power 15.4 W (IEEE 802.3 af) 30 W (IEEE 802.3 at)
Interfaces	
Item	Content
SFP Slot	Number: 2 Type: 1000BaseFX port (SFP slot)
Ethernet Port	Number: 16 Type: RJ45, 10/100/1000M automatic detection, full/half duplex MDI/MDI-X adaptive
Optical Fiber	Support single-mode/multi-mode fiber Multi-mode fiber: 550M Single-mode optical fiber: 20/40/60/80/100KM

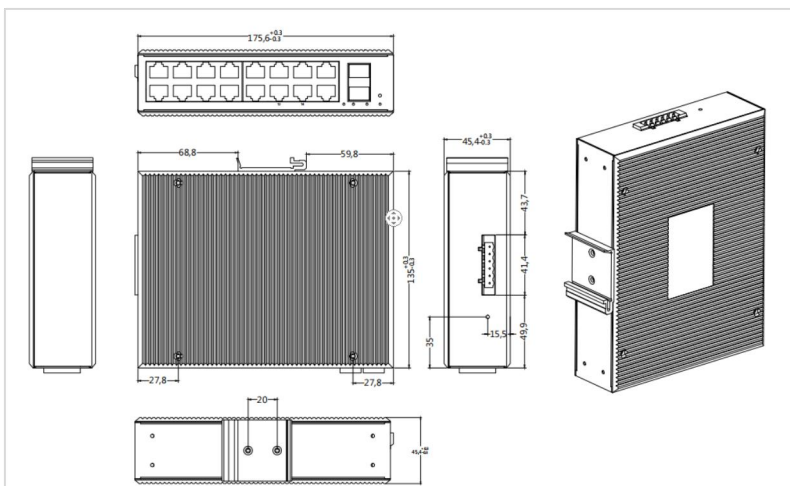
# Managed Industrial Switch FNS200-216-AGB-SFP-A



## Other

<b>Model</b>	FNS200-AGB-A
<b>Item</b>	<b>Content</b>
<b>Shell</b>	IP40 protection level, metal casing
<b>Characteristic</b>	Support the Console, Telnet, SSH, WEB management Support SNMP v1 / v2c/v3
<b>Dimension</b>	175.6×135×45.5mm
<b>Weight</b>	<1.5Kg
<b>Installation Method</b>	DIN rail and wall mounted
<b>Heat-dissipating Method</b>	Natural cooling, no fan
<b>Redundant Technology</b>	Support STP/RSTP/MSTP Support ERPS
<b>Multicast Technology</b>	IGMP snooping, MLD snooping
<b>Switching Function</b>	Support the port speed limit Support port truck Support port flow control port VLAN, IEEE 802.1 Q VLAN Support broadcast storm suppression
<b>LED</b>	Power Indicator: PWR Port indicator: POE port, SFP port (Link/ACT)

## Dimension (mm): 175.6×135×45.5mm



# Managed Industrial Switch FNS200-216-AGB-SFP-A



## Order Information

Model	Description
<b>FNS200-216-AGB-SFP-A</b>	Managed Industrial Switch: 2 Gigabit optical port + 16 Gigabit adaptive electrical ports, SFP ports, DC12-52V power supply, wide temperature (-40 ° C -75° C), loop network (STP/RSTP/ERPS), WEB/CLI management, SNMP-VLAN, and DC 24V/1A power adapter